



R. Christensen  
by Berenson.

# DECORATIVE *HARDWARE*

2025



Featuring the Lips Collection  
in Black

# TABLE OF CONTENTS

Disc ..... 12

Dual..... 14

Edge ..... 16

Fluid ..... 18

Fuji..... 20

I-Spazio ..... 22

Lips ..... 24

Mini ..... 26

Right..... 28

Seize ..... 30

Slide ..... 32

Spiral..... 34

Square ..... 36

Stylus ..... 37

Up ..... 38

Wave..... 40

Additional Collections ..... 42

## GENERAL INFORMATION

Simplicity ..... 4

Online Ordering ..... 6

Key to Codes..... 7

Finish Guide ..... 8

Display Boards..... 43

Display Towers..... 46

## LOOK FOR THESE ICONS THROUGHOUT



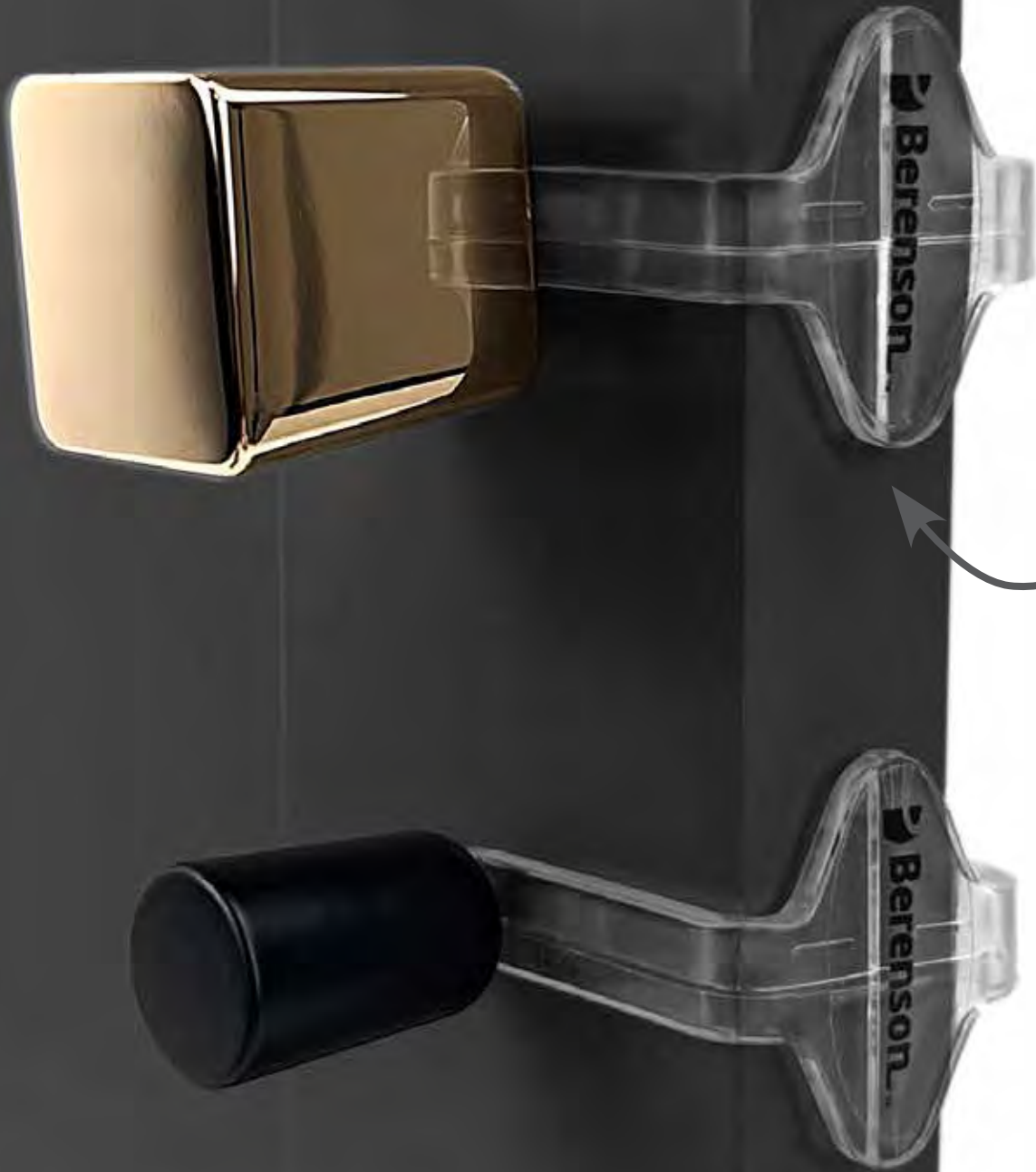
Efficiently uses both energy and material, reducing pollutants and waste.

Supports continuous improvements in environmental sustainability.



Extreme finishes exceed KCMA finish standards by 10X, providing extra durability for long-lasting beauty.

Featuring the Mini Collection  
Large Square Knob in Rose Gold  
Small Round Knob in Matte Black  
with 1in. Sample Clip



# SAMPLICITY

## FREE SAMPLE PROGRAM

Sample requests can be placed through our website, [BerensonHardware.com](https://BerensonHardware.com), by industry professionals who have a registered account. Requests may also be made by emailing [Orders@BerensonHardware.com](mailto:Orders@BerensonHardware.com)

## BENEFITS

We want to ensure that our customers are confident in their purchase with us, which is why we make ordering samples simple and convenient. Through Samplicity, our one of a kind sample program, we provide more samples than anyone else!

## FREE SAMPLE CLIP

As a bonus, you can choose to receive a free sample clip with your order. This unique clip lets you preview how our hardware looks on your cabinet door or drawer without the commitment of drilling holes.

Choose between a 1in. clip, best for doors, or a 3in. clip, best for drawers.

## NUMBER OF SAMPLES

Order up to 5 samples. Limit of 1 piece per style.

## SHIPPING

Free samples also qualify for free shipping! All samples are shipped via USPS mail.

**You must have a mail receptacle to receive the package.**

## PRODUCTS INCLUDED

Berenson and Advantage Plus by Berenson knobs and pulls of 160mm CC or less.

**Please Note:** Longer lengths and R. Christensen by Berenson Hardware can be ordered as a sample at 50% off MSRP with paid flat rate shipping (\$4 per part). Hooks and appliance pulls are not available as samples.

*Sample parts are not for display. Please contact us for display items and options.*

## 3 EASY STEPS

1

**Log in to your account** at [BerensonHardware.com](https://BerensonHardware.com).

Find the part you would like a sample of and click on its item number or description.

This will bring up the Item Detail page and the **Request A Sample** button.

2

A window will pop up requesting **shipping info** and credit card info, if the sample requires a payment.

3

After you fill in the required information, click **Submit Sample Request** and your request will be processed.





Featuring the Fuji Collection  
in Soft Gold



# ONLINE ORDERING



## GAIN ACCESS TO ACCOUNT TOOLS & More!

Anyone with a Berenson customer account is eligible for online ordering through our website, **BerensonHardware.com**.

Follow the steps below to register today!

**1**

### CREATE ACCOUNT

Scan the QR code at the top of the page to be taken to our create account page.

Enter your name and email address.

**2**

### APPROVAL PROCESS

Check your email for a message from **Web@BerensonHardware.com**. This will include a link to fill out your business information.

*If you don't see something in your inbox, be sure to check your junk mail and add the email address above to your safe sender's list.*

Once approved, you'll receive an email to log in to your account.

**3**

### ORDER ONLINE

Use your website account to place orders at any time!

You can also access various account tools to help you stay in the know about your Berenson orders.

## FIND A STORE

Customers can use our **Find a Store** page to search for the closest showroom or distributor offering our hardware. Just enter your zip code or address to see a full list of nearby stores with Berenson product.

## DON'T BUY DIRECT?

Industry professionals can still sign up for a web account, giving you access to product availability, favorites lists, and more!

## ACCOUNT TOOLS

Access these tools and more with a web account:

Order Tracking  
Recent Orders  
Invoices  
Backorders

**For more information, contact:**  
**Sales@BerensonHardware.com | 800.333.0578**



# KEY TO CODES

## PART NUMBER BREAKDOWN

Parts Are Identified As Follows:

**ITEM #:** Four-digit item code  
(followed by a dash)

**MATERIAL:** One-digit primary material code

**FINISH:** Two-digit code or a character code  
(two or three letters) to distinguish the finish (followed by a dash)

**PACKAGING:** One-letter packaging code



## EXAMPLE

Part Number:

**6076-1SFG-C**

ITEM #

MATERIAL

FINISH

PACKAGING

*Description of Above Example:  
Zinc Diecast, Soft Gold, Supplied  
in a carton w/Mounting Hardware*

## KEY TO MATERIAL CODES

- 1** Zinc Diecast (Zamac)
- 4** Aluminum

## KEY TO PACKAGING CODES

- B** Item is supplied in bulk without mounting screws or escutcheon pins.  
(Mounting hardware ordered separately.)
- C** Item is supplied in a carton with 8-32 x 1 in. or M4 x 45mm break off screws.
- P** Item is individually polybagged with 8-32 x 1 in. screws or other mounting hardware.

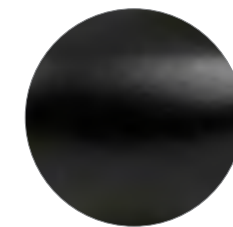


## PRICING BREAKDOWN

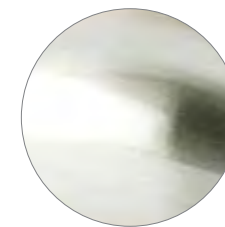
Scan the QR code for the most updated pricing brackets for codes A-E.



# FINISH GUIDE



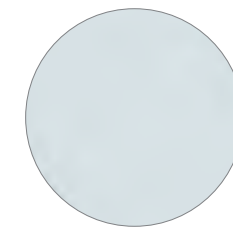
Black  
**55**



Brushed Nickel  
**BPN**



Charcoal Gray  
**CG**



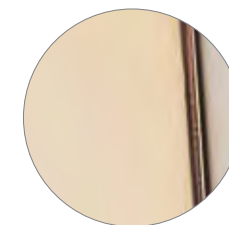
Dull Chrome  
**DC**



Honey Gold  
**HG**



Polished Chrome  
**26**



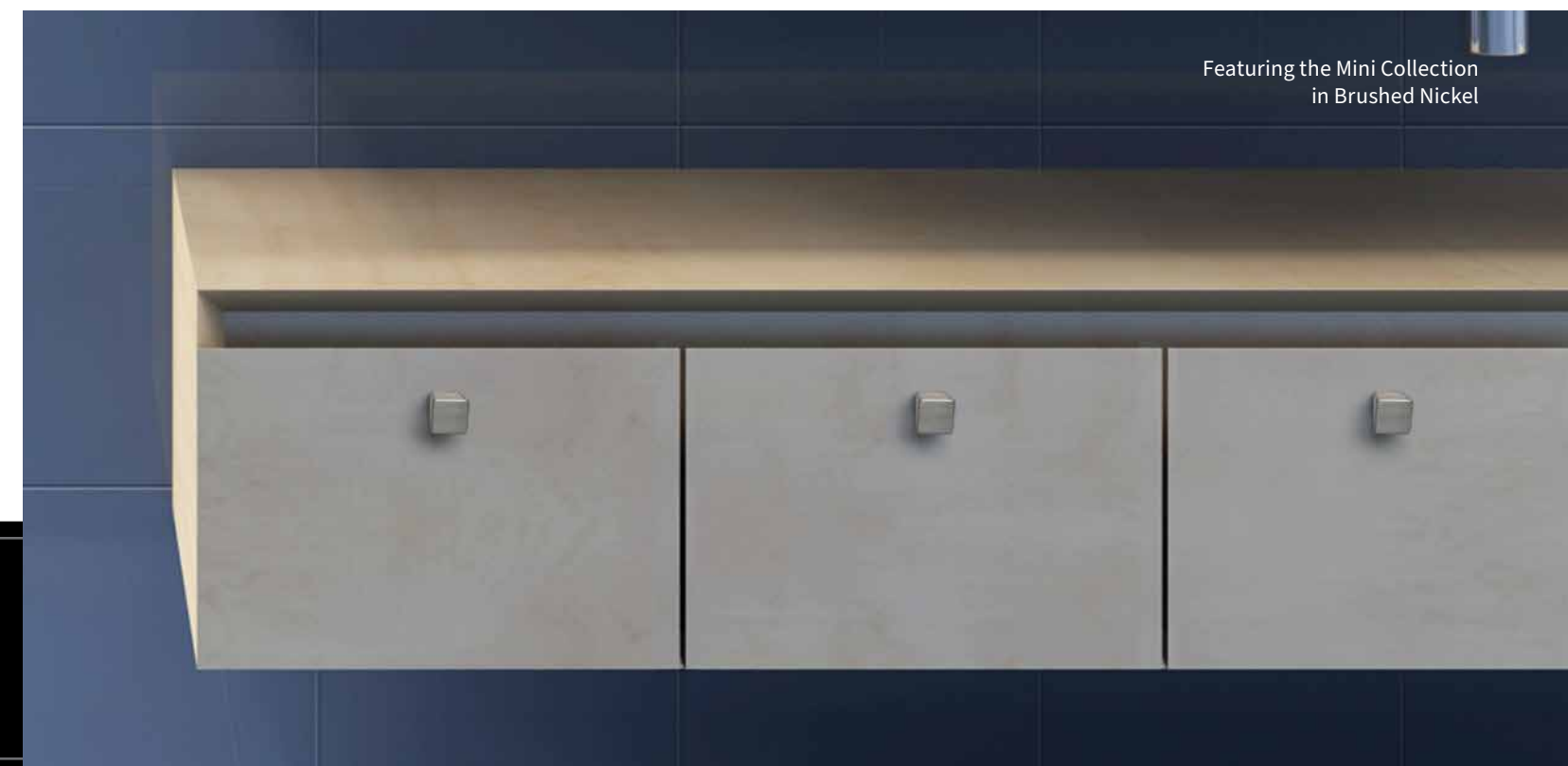
Rose Gold  
**RSG**



Soft Gold  
**SFG**



White  
**48**



Featuring the Mini Collection  
in Brushed Nickel



# ART TECH

## MODERN STYLE

Clean, simple, defined lines give this R. Christensen by Berenson series a feeling that is both elegant and personal.



Featuring the Spiral Collection  
in Brushed Nickel



# DISC

feminine curve

## Disc Available Finishes, Sizes & Part Numbers

*Size Shown: Large*



BLACK

Large Knob	6081-1055-C
Small Knob	6077-1055-C



BRUSHED NICKEL

Large Knob	6083-1BPN-C
Small Knob	6079-1BPN-C



SOFT GOLD

Large Knob	6080-1SFG-C
Small Knob	6076-1SFG-C



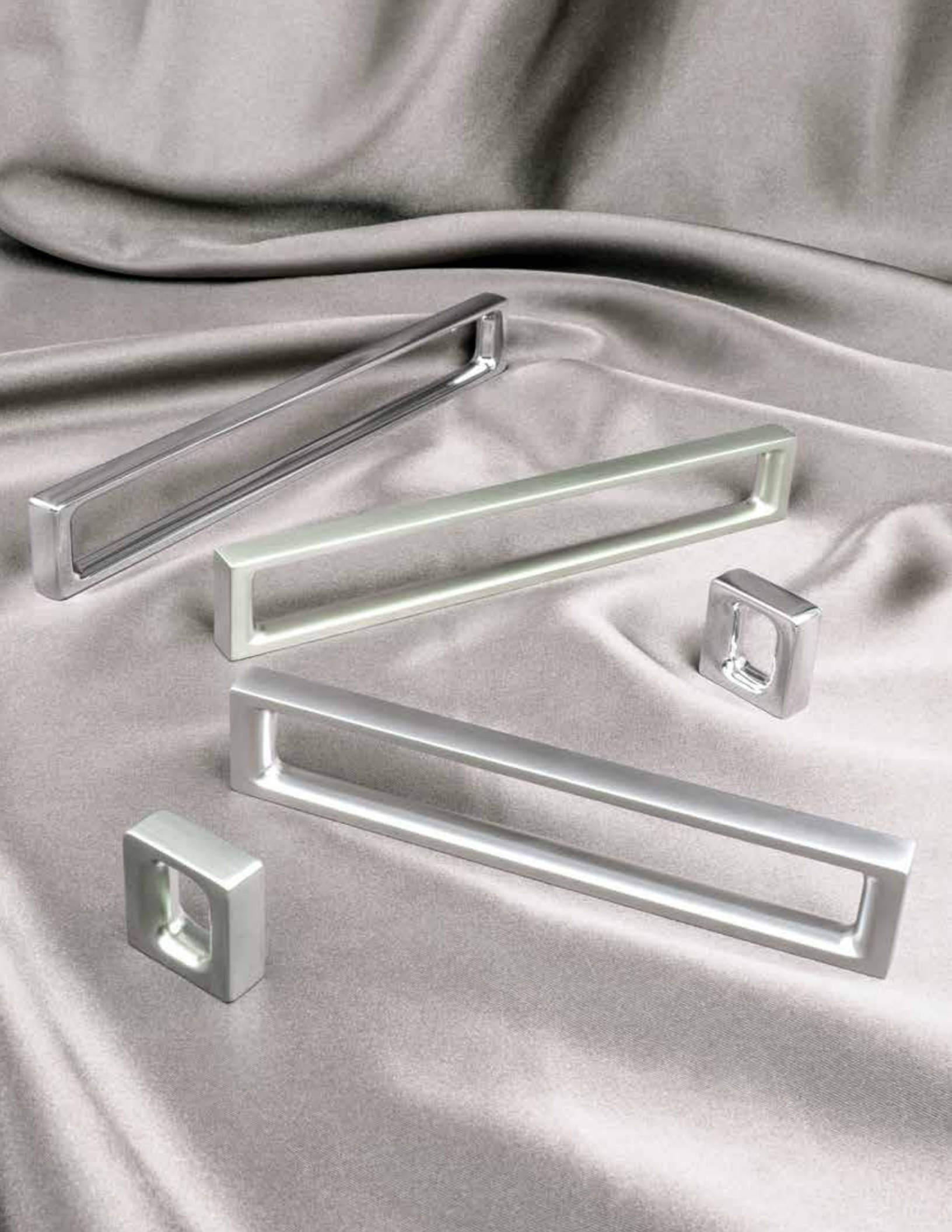
WHITE

Large Knob	6082-1048-C
Small Knob	6078-1048-C

## Disc Product Data

Type	Diameter	Base	Height	Tap
Large Knob	1 9/32in.	3/4in.	1in.	M4
Small Knob	1 3/32in.	5/8in.	29/32in.	M4





# DUAL

negative space

## Dual Available Finishes, Sizes & Part Numbers

♻️ COLLECTION DESIGNED WITH GREEN IN MIND ⚡ DURABLE FINISH



BRUSHED NICKEL

192mm	9302-1BPN-C
160mm	9305-1BPN-C
128mm	9308-1BPN-C
16mm	9311-1BPN-C



DULL CHROME

192mm	9304-10DC-C
160mm	9307-10DC-C
128mm	9310-10DC-C
16mm	9314-10DC-C



POLISHED CHROME ⚡

192mm	9303-1026-C
160mm	9306-1026-C
128mm	9309-1026-C
16mm	9313-1026-C

## Dual Product Data

CC	Length	Width	Height	Tap
192mm	7 7⁄8in.	3⁄8in.	1in.	M4
160mm	6 5⁄8in.	3⁄8in.	1in.	M4
128mm	5 3⁄8in.	3⁄8in.	1in.	M4
16mm	1in.	3⁄8in.	1in.	M4

CC = center to center | images of parts are not shown at 100% scale





# EDGE

sleek | thin design

## Edge Available Finishes, Sizes & Part Numbers

♻️ COLLECTION DESIGNED WITH GREEN IN MIND ⚡ DURABLE FINISH



BRUSHED NICKEL

160mm	9269-1BPN-C
96mm	9272-1BPN-C



DULL CHROME

160mm	9271-10DC-C
96mm	9274-10DC-C



POLISHED CHROME ⚡

160mm	9270-1026-C
96mm	9273-1026-C

## Edge Product Data

CC	Length	Width	Height	Tap
160mm	7 3⁄8in.	5⁄16in.	1 3⁄8in.	M4
96mm	4 7⁄8in.	5⁄16in.	1 3⁄8in.	M4

CC = center to center | images of parts are not shown at 100% scale



# FLUID

flowing | slim pulls

## Fluid Available Finishes, Sizes & Part Numbers



BLACK

288mm & 320mm	1320-1055-C
192mm & 224mm	1325-1055-C



BRUSHED NICKEL

288mm & 320mm	1321-1BPN-C
192mm & 224mm	1326-1BPN-C



CHARCOAL GRAY

288mm & 320mm	1323-10CG-C
192mm & 224mm	1328-10CG-C



HONEY GOLD

288mm & 320mm	1345-10HG-C
192mm & 224mm	1346-10HG-C



POLISHED CHROME

288mm & 320mm	1322-1026-C
192mm & 224mm	1327-1026-C



ROSE GOLD

288mm & 320mm	1349-1RSG-C
192mm & 224mm	1350-1RSG-C



SOFT GOLD

288mm & 320mm	1319-1SFG-C
192mm & 224mm	1324-1SFG-C

## Fluid Product Data

CC	Length	Width	Height	Tap
288mm & 320mm	14 9/32in.	1/2in.	1 11/32in.	M4
192mm & 224mm	9 9/32in.	1/2in.	1 1/8in.	M4





# FUJI

gentle peak | refined

## Fuji Available Finishes, Sizes & Part Numbers



COLLECTION DESIGNED WITH GREEN IN MIND



DURABLE FINISH



BLACK

224mm	1308-1055-C
160mm	1311-1055-C



BRUSHED NICKEL

224mm	1188-1BPN-C
160mm	1190-1BPN-C



CHARCOAL GRAY

224mm	1310-10CG-C
160mm	1313-10CG-C



POLISHED CHROME



224mm	1189-1026-C
160mm	1191-1026-C



SOFT GOLD

224mm	1309-1SFG-C
160mm	1312-1SFG-C

## Fuji Product Data

CC	Length	Width	Height	Tap
224mm	12 ½in.	1 ¼in.	13⁄16in.	M4
160mm	9in.	1 ¼in.	13⁄16in.	M4



# I-SPAZIO

industrial

## I-Spazio Available Finishes, Sizes & Part Numbers

♻️ COLLECTION DESIGNED WITH GREEN IN MIND ⚡ DURABLE FINISH



BLACK

192mm*	1316-1055-C
192mm	1317-1055-C
128mm	1318-1055-C



BRUSHED NICKEL

192mm*	9293-1BPN-C
192mm	9296-1BPN-C
128mm	9299-1BPN-C



DULL CHROME

192mm*	9295-10DC-C
192mm	9298-10DC-C
128mm	9301-10DC-C



POLISHED CHROME ⚡

192mm*	9294-1026-C
192mm	9297-1026-C
128mm	9300-1026-C

## I-Spazio Product Data

CC	Length	Width	Height	Tap
192mm*	10 ¼in.	¼in.	1 ¼in.	M4
192mm	10 ¼in.	¼in.	1 ¼in.	M4
128mm	7 ⅞in.	¼in.	1 ¼in.	M4

\*These pulls have an off-center handle design.





# LIPS

subtle | low profile

## Lips Available Finishes, Sizes & Part Numbers

 COLLECTION DESIGNED WITH GREEN IN MIND  DURABLE FINISH



BLACK


224mm	1314-1055-C
160mm	1315-1055-C



BRUSHED NICKEL

224mm	1184-1BPN-C
160mm	1182-1BPN-C



POLISHED CHROME 

224mm	1185-1026-C
160mm	1183-1026-C

## Lips Product Data

CC	Length	Width	Height	Tap
224mm	12 5⁄16in.	1 13⁄16in.	13⁄16in.	-
160mm	9 7⁄16in.	1 13⁄16in.	13⁄16in.	-



# MINI

perfect accent

## Mini Available Finishes, Sizes & Part Numbers

Size Shown: Large



BLACK

Large Round	1336-1055-C
Large Square	1343-1055-C
Small Round	1340-1055-C
Small Square	1344-1055-C



BRUSHED NICKEL

Large Round	1337-1BPN-C
Large Square	1330-1BPN-C
Small Round	1341-1BPN-C
Small Square	1333-1BPN-C



CHARCOAL GRAY

Large Round	1339-10CG-C
Large Square	1332-10CG-C
Small Round	Not Available
Small Square	Not Available



HONEY GOLD

Large Round	1348-10HG-C
Large Square	1347-10HG-C
Small Round	Not Available
Small Square	Not Available



POLISHED CHROME

Large Round	1338-1026-C
Large Square	1331-1026-C
Small Round	1342-1026-C
Small Square	1334-1026-C



ROSE GOLD

Large Round	1351-1RSG-C
Large Square	1353-1RSG-C
Small Round	1352-1RSG-C
Small Square	1354-1RSG-C



SOFT GOLD

Large Round	1335-1SFG-C
Large Square	1329-1SFG-C
Small Round	Not Available
Small Square	Not Available

## Mini Product Data

Type	Length	Width	Diameter	Height	Tap
Large Round	-	-	$\frac{3}{32}$ in.	$1\frac{3}{32}$ in.	M4
Large Square	$\frac{3}{32}$ in.	$\frac{3}{32}$ in.	-	$1\frac{3}{32}$ in.	M4
Small Round	-	-	$\frac{19}{32}$ in.	$\frac{15}{16}$ in.	M4
Small Square	$\frac{19}{32}$ in.	$\frac{19}{32}$ in.	-	$\frac{15}{16}$ in.	M4





# RIGHT

sleek edges

## Right Available Finishes, Sizes & Part Numbers



BLACK

320mm	6069-1055-C
192mm	6068-1055-C
128mm	6067-1055-C



BRUSHED NICKEL

320mm	6075-1BPN-C
192mm	6074-1BPN-C
128mm	6073-1BPN-C



SOFT GOLD

320mm	6066-1SFG-C
192mm	6065-1SFG-C
128mm	6064-1SFG-C



WHITE

320mm	6072-1048-C
192mm	6071-1048-C
128mm	6070-1048-C

## Right Product Data

CC	Length	Width	Height	Tap
320mm	14 1/16in.	1 9/32in.	1 3/32in.	M4
192mm	9 1/16in.	1 9/32in.	1 3/32in.	M4
128mm	6 1/2in.	1 9/32in.	1 3/32in.	M4

CC = center to center | images of parts are not shown at 100% scale

maintain a *flush look*  
on your slab doors



# SEIZE

flush | rectangular

## Seize Available Finishes, Sizes & Part Numbers

♻️ COLLECTION DESIGNED WITH GREEN IN MIND ⚡ DURABLE FINISH



BRUSHED NICKEL

160mm

9281-1BPN-C



DULL CHROME

160mm

9283-10DC-C



POLISHED CHROME ⚡

160mm

9282-1026-C

## Seize Product Data

CC	Length	Width	Depth	Tap
160mm	7 1/16in.	2in.	7/16in.	M4



the *contemporary*  
hook design is  
a sophisticated  
addition to any room



# SLIDE

sleek | subtle curves

## Slide Available Finishes, Sizes & Part Numbers

♻️ COLLECTION DESIGNED WITH GREEN IN MIND ⚡ DURABLE FINISH



BRUSHED NICKEL

Wide Hook	9278-1BPN-P
Narrow Hook	9275-1BPN-P



DULL CHROME

Wide Hook	9280-10DC-P
Narrow Hook	9277-10DC-P



POLISHED CHROME ⚡

Wide Hook	9279-1026-P
Narrow Hook	9276-1026-P

## Slide Product Data

Type	Length	Width	Height	Tap
Wide Hook	2 1/8in.	2in.	1 7/16in.	-
Narrow Hook	2 1/8in.	1in.	1 3/16in.	-



# SPIRAL

avant-garde

## Spiral Available Finishes, Sizes & Part Numbers

⚡ DURABLE FINISH



BRUSHED NICKEL

320mm	1144-1BPN-P
224mm	1143-1BPN-P
160mm	1142-1BPN-P



POLISHED CHROME ⚡

320mm	1141-1026-P
224mm	1140-1026-P
160mm	1139-1026-P

## Spiral Product Data

CC	Length	Width	Height	Tap
320mm	13 3⁄16in.	3⁄4in.	1in.	M4
224mm	9 3⁄16in.	3⁄4in.	1in.	M4
160mm	6 1⁄16in.	3⁄4in.	1in.	M4

CC = center to center | images of parts are not shown at 100% scale





# SQUARE

90° angles

## Square Available Finishes, Sizes & Part Numbers

♻️ COLLECTION DESIGNED WITH GREEN IN MIND ⚡ DURABLE FINISH



BRUSHED NICKEL

128mm	9284-1BPN-C
96mm	9287-1BPN-C
64mm	9290-1BPN-C



DULL CHROME

128mm	9286-10DC-C
96mm	9289-10DC-C
64mm	9292-10DC-C



POLISHED CHROME ⚡

128mm	9285-1026-C
96mm	9288-1026-C
64mm	9291-1026-C

## Square Product Data

CC	Length	Width	Height	Tap
128mm	5 3⁄4in.	1⁄2in.	1 3⁄16in.	M4
96mm	4 1⁄2in.	7⁄16in.	1 3⁄16in.	M4
64mm	3 1⁄8in.	3⁄8in.	1 3⁄16in.	M4





# STYLUS

flush aesthetic

## Stylus Available Finishes, Sizes & Part Numbers

🔄 COLLECTION DESIGNED WITH GREEN IN MIND ⚡ DURABLE FINISH *Size Shown: Extra Small*



BRUSHED NICKEL

Large	9324-1BPN-C
Medium	9327-1BPN-C
Small	9330-1BPN-C
Extra Small	9333-1BPN-C



DULL CHROME

Large	9326-10DC-C
Medium	9329-10DC-C
Small	9332-10DC-C
Extra Small	9335-10DC-C



POLISHED CHROME ⚡

Large	9325-1026-C
Medium	9328-1026-C
Small	9331-1026-C
Extra Small	9334-1026-C

## Stylus Product Data

Type	Length	Width	Depth	Tap
Large	2 ½in.	2 ½in.	½in.	-
Medium	1 ⅞in.	1 ⅞in.	½in.	-
Small	1 ½in.	1 ½in.	½in.	-
Extra Small	1 ⅛in.	1 ⅛in.	½in.	-



# UP

practical | delicate style

## Up Available Finishes, Sizes & Part Numbers

⚡ DURABLE FINISH



BRUSHED NICKEL

64mm	9737-1BPN-C
16mm	9739-1BPN-C



POLISHED CHROME ⚡

64mm	9738-1026-C
16mm	9740-1026-C

## Up Product Data

CC	Length	Width	Height	Tap
64mm	3 ⅞in.	¾in.	2in.	M4
16mm	1 ⅞in.	¾in.	2 15⁄16in.	M4



# WAVE

bold | commanding

## Wave Available Finishes, Sizes & Part Numbers

COLLECTION DESIGNED WITH GREEN IN MIND DURABLE FINISH Size Shown: Small



BRUSHED NICKEL

Large Knob	9315-1BPN-C
Medium Knob	9318-1BPN-C
Small Knob	9321-1BPN-C



DULL CHROME

Large Knob	9317-10DC-C
Medium Knob	9320-10DC-C
Small Knob	9323-10DC-C



POLISHED CHROME

Large Knob	9316-1026-C
Medium Knob	9319-1026-C
Small Knob	9322-1026-C

## Wave Product Data

Type	Length	Width	Height	Tap
Large Knob	3 1/8in.	3 1/8in.	1 1/8in.	M4
Medium Knob	1 15/16in.	1 15/16in.	1in.	M4
Small Knob	1 1/4in.	1 1/4in.	1in.	M4





Featuring the Arch Collection  
in Brushed Nickel

# ADDITIONAL COLLECTIONS

The R. Christensen by Berenson line is characterized by clean edges and smooth surfaces. In addition to the collections featured on the previous pages of this catalog, the below collection and Mix and Match items are available to order.

Scan the QR code or read the product descriptions below to learn more.



## ARCH

So effortless in design, the decorative hardware of the Arch Collection may be initially mistaken for merely a design element on your cabinet.

The smooth ability to blend in makes these pulls perfect for the clean style of contemporary homes.

Scan the QR code above to view the full collection on our website.



## MIX & MATCH

Find hardware with unique designs and finishes that can be coordinated across a variety of collections and styles. The items here can easily be coordinated with each other to create your own pairings

Scan the QR code above to view limited quantity and Mix & Match items.





# DISPLAY BOARDS

Display Boards Measure 11 13/16in. x 15 13/16in. x 1/8in.



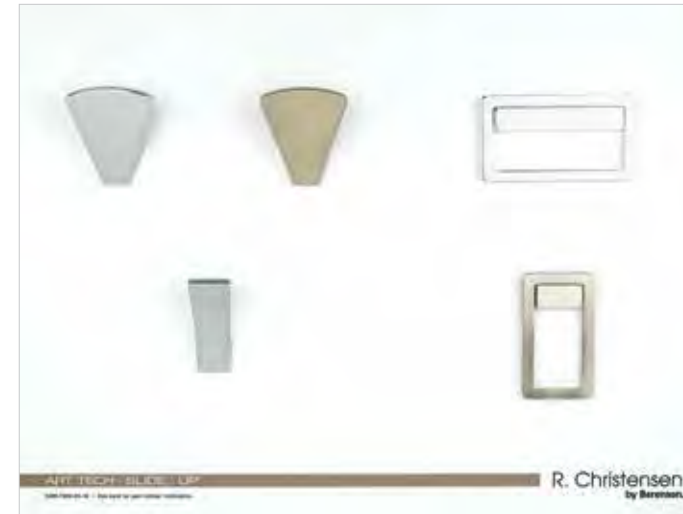
Edge | Square | Dual

0571-7000-03-W



Fluid | Mini

0572-7000-03-W



Slide | Up

0348-7000-03-W



Stylus | Seize

0352-7000-03-W



Fuji

0573-7000-03-W



I-Spazio | Lips | Mini

0574-7000-03-W



Right | Disc

0540-7000-03-W



Spiral | Wave

0575-7000-03-W



Featuring the Fluid & Mini Collections  
in Honey Gold





Featuring the Fluid Collection  
in Polished Chrome



# DISPLAY TOWERS

Scan the QR Code Above to Access the Tower Order Form

R. Christensen by  
Berenson Header ———  
0514-7000-02



## 12-BOARD TOWER 0012-2000-01

### WHAT TO KNOW:

Measures 19 3/4in. width by 85 1/16in. height  
Holds 12 display boards  
Display boards measure 11 13/16 in. x 15 13/16in. x 1/8in.

Our 12-board display tower holds six display boards per side, which can easily be taken out to view more information with your customers. Included with each tower are assembly instructions, hardware and tools for assembly.

Our display boards are laid out to visually represent the way hardware can look in the home. Every available finish and multiple center to center lengths are shown so your customer can see all options available for purchase. These boards are made to fit into our display towers.

### Additional Display Towers & Display Boards

We have a 36-board display tower also available to purchase (Part Number: 0011-2000-01). Choose display boards from Advantage Plus by Berenson, Berenson and R. Christensen by Berenson for a well rounded display of Berenson's offerings.

# R. Christensen by Berenson

2495 Main Street, Suite 111 Buffalo, NY 14214-2152  
Phone: 800.333.0578 | Fax: 716.833.2402  
Email: [Info@BerensonHardware.com](mailto:Info@BerensonHardware.com)  
[BerensonHardware.com](http://BerensonHardware.com)

© 2025 Berenson Corp

25.02  
0490-9000-09

FOLLOW US ON SOCIAL MEDIA!



*Scan the QR code for easy access to our social media pages & to view our digital catalogs!*

